



Ministry of Infrastructure and the  
Environment

# Working for the government (at IenM - KiM)

Jan van der Waard

KiM Netherlands Institute for  
Transport Policy Analysis



## What about you?

- Who wants to work in
  - university,
  - research institute,
  - consulting,
  - government?
- Don't be discouraged by lack of positions



# How many people work at the Ministry of Infrastructure and the Environment

a) ca. 12.000

b) ca. 5.600





# What is the average age of people that started working at the Ministry last year?

a) Older than 35 years

b) Younger than 35 years





# The Ministry of Infrastructure and the Environment

.....is committed to improving quality of life, access and mobility in a clean, safe and sustainable environment. The Ministry strives to create an efficient network of roads, railways, waterways and airways, effective water management to protect against flooding, and improved air and water quality.



# The National Highway System

## Quickly and safe by road

- 3.076 kilometers highways
- 1.587 kilometers exits and ramps
- 2.853 viaducts, 33 ecoducts
- 24 tunnels
- 767 bridges
- 5 regional traffic centers
- 1 national traffic centers
- 168 Dynamic Route Information Panels (DRIP's)
- Over 1.500 cameras





# National Water Network

## Quickly and safe on the water

- 3.462 km rivers and channels
- 3.513 km sea access fairways
- 93 locks
- 325 bridges





# National watersysteem

## Protection against high water and sufficient clean fresh water

- 90.310 km<sup>2</sup> surface water
- North sea, Wadden sea
- 35 km dunes
- 251 km levees en dams
- De Afsluitdijk en de Houtribdijk
- Maeslantkering en Oosterscheldekering
- 8 aquaducts







# The largest department is Rijkswaterstaat?

- The executive Agency of the Ministry
- Initiated 24 May 1798
- Regionally oriented and nationally controlled
- 8.800 employees 350 locations
- Ca 5 billion budget 2014
- Several knowledge centres





## KiM Netherlands Institute for Transport Policy Analysis

- **Research institute** within the Netherlands Ministry of Infrastructure and Environment
- **Established in 2006** to support evidence-based transport policymaking





## Products and services

- **Demand-driven** research on strategic policy questions
- **'Knowledge-at-the-table'**
- Internal **observational reports** on own initiative





## KiM is part of the Ministry, but...

- Research content is **independent** of policy or politics
- All research studies are **peer-reviewed**
- All publications are **public**







## Organisation KiM (2)

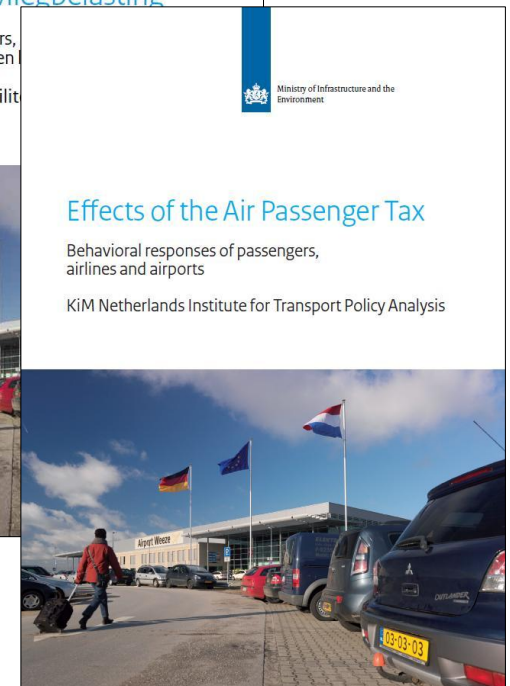
### People

- About 25 people (mostly researchers)
- Wide range of research disciplines
  - Mix of Master and PhD level





# Some of our products

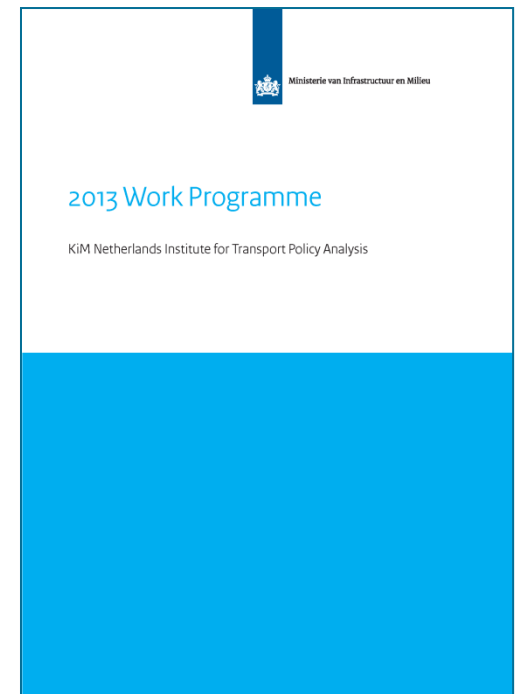




# Research programming at KiM

## **Demand-driven** research programming:

- Knowledge questions from policy departments of the Ministry
- Questions are further elaborated through consultations





## Policy themes are reflected in KiM themes

1. Mobility, accessibility and spatial planning
2. Mobility of groups
3. Sustainable mobility, safety and transition
4. Models and data
5. Social importance, the role of government and market organisation
6. Policy evaluation and assessment frameworks





# Functions

## Technical

- Specialist: civil engineering, hydraulics, geo techniques, mechanical engineering,
- Generalist: Project managers for infrastructural projects
- (Line management)

## Current “hot” issues:

- Asset management
- Cybersecurity
- Big data
- Addaptive policy development and implementation
- In-car systems in relation to traffic management, road design and - construction



## Some specific issues

### **Government supports “The new way of working” (HNW)**

- In 2017 => 0,7 workplace / fte
- 70-75% of workplaces are desks
- Other workplaces are for ‘meeting’ (1 space = 2 chairs)
- Flexibility!

### **The interlanguage = Dutch**

### **You are a public servant**



# Opportunities

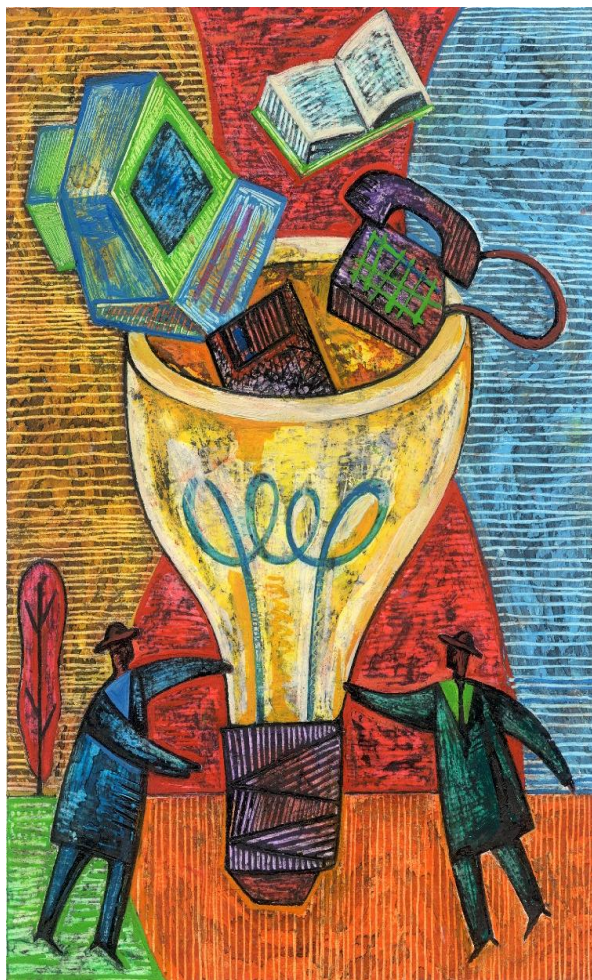
General info: [werkenvoornederland.nl](https://werkenvoornederland.nl)

Rijkswaterstaat: [rijkswaterstaat.nl](https://rijkswaterstaat.nl)

KiM [KiMnet.nl](https://KiMnet.nl)

Internship: [werkenvoornederland.nl/stages](https://werkenvoornederland.nl/stages)

Traineeship: [werkenvoornederland.nl/rwstraineer](https://werkenvoornederland.nl/rwstraineer)



# Questions ?